

GEOROUTE 7

LASTUR

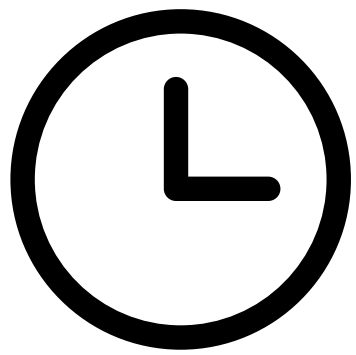
THE VALLEY OF WATER

#GEOPARKEA

LASTUR GEOROUTE

PRACTICAL INFORMATION

PR Gi 44



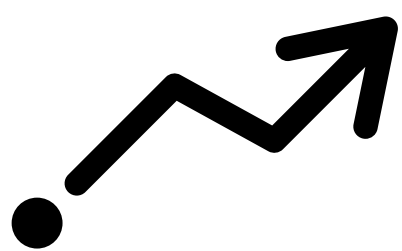
DURATION

2 h



DISTANCE

6 km



ELEVATION
DIFFERENCE

LASTUR:

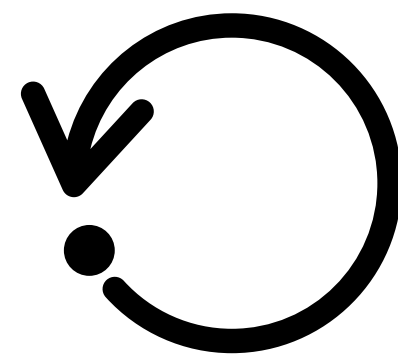
+86 m

-241 m

DEBA:

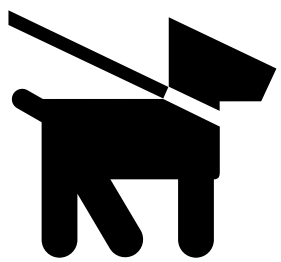
+241 m

-86 m



CIRCULAR

NO



geoparkea.eus



#GEOPARKEA



((112))

SOS DEIAK

LASTUR GEOROUTE

HOW TO GET THERE?

Starting point: Artzabal Parking in Deba or San Nikolas neighborhood of Lastur..

Nearest town: Deba.

Coordinates: 43°17'15.5"N 2°21'39.8"W

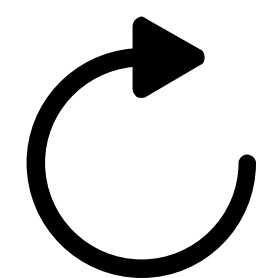
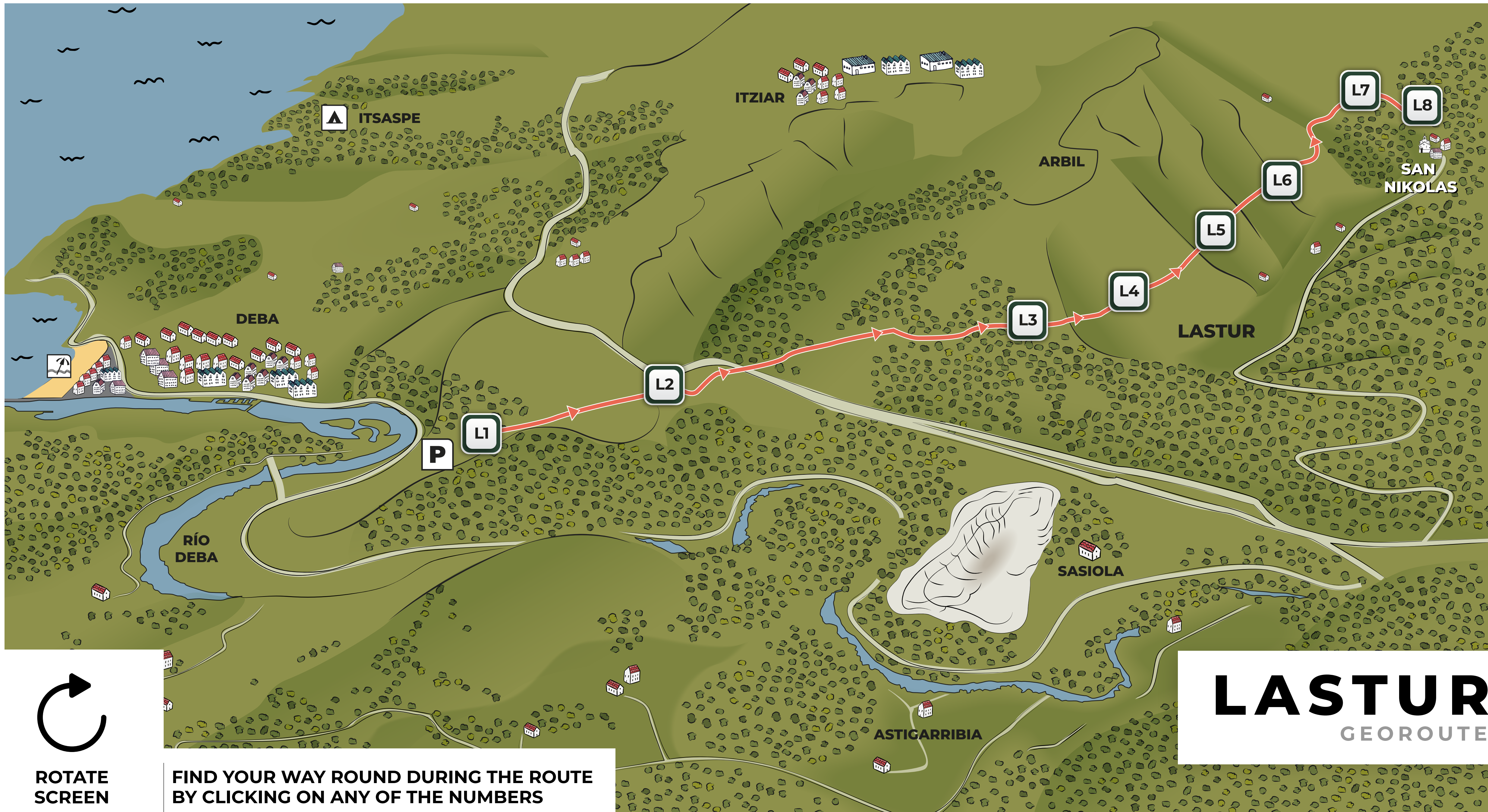
Access to Deba: By car via the N-634 or by public transport to Deba and walk to the Artzabal Parking.

[View in Google Maps](#)

Access to Lastur: By car from the Itziar hill or by taking the turnoff on the N-634 in the Sasiola area (Deba).

[View in Google Maps](#)





ROTATE
SCREEN

FIND YOUR WAY ROUND DURING THE ROUTE
BY CLICKING ON ANY OF THE NUMBERS

LASTUR
GEOROUTE



INTRODUCTION

The Lastur Valley is a large, elongated depression formed by the dissolution of limestone. The water channel built in the early 20th century offers an excellent opportunity for comfortable exploration.

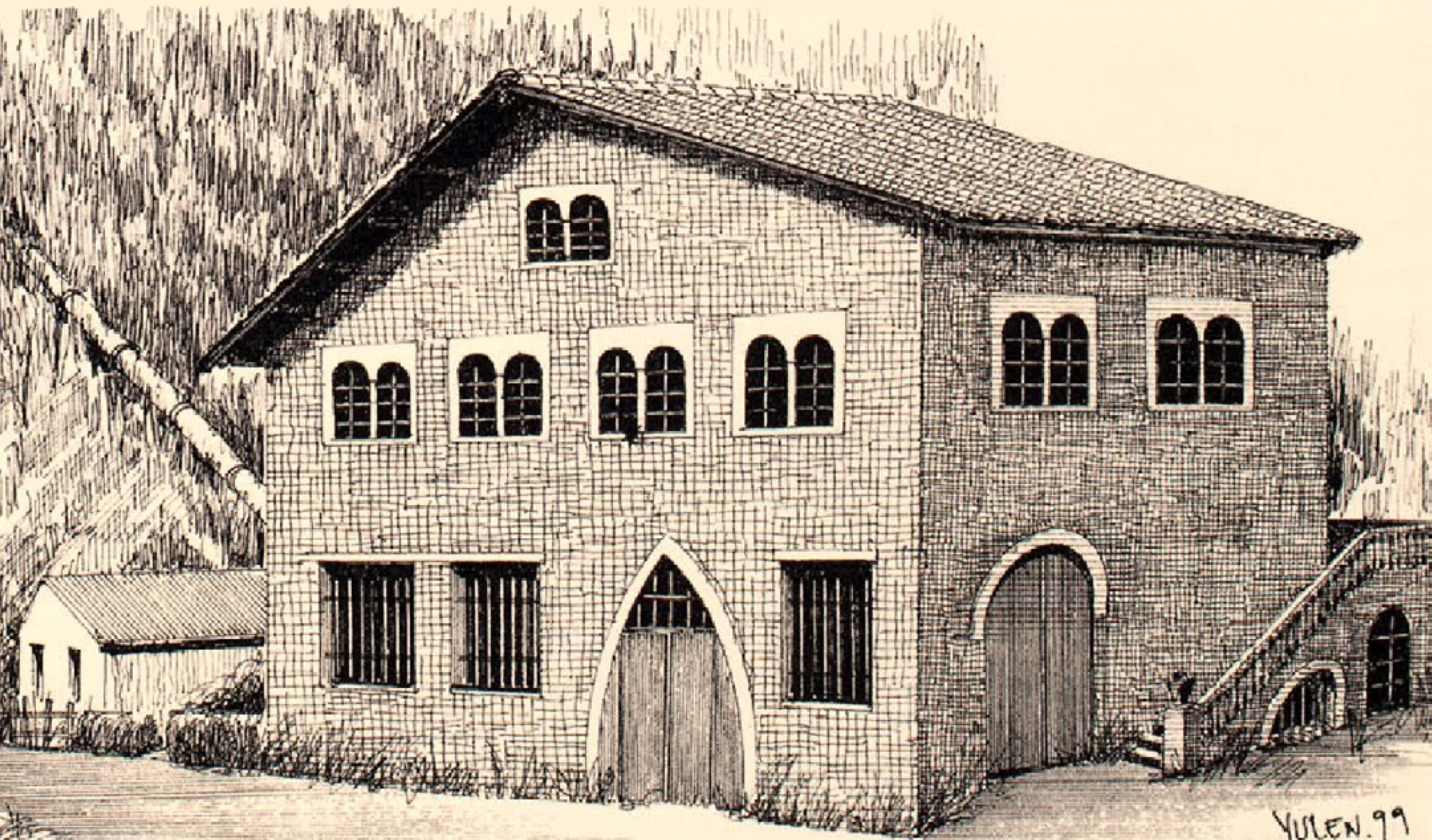


This georoute features eight points of interest indicated by plaques along the way. Locate them and enjoy the descriptions.



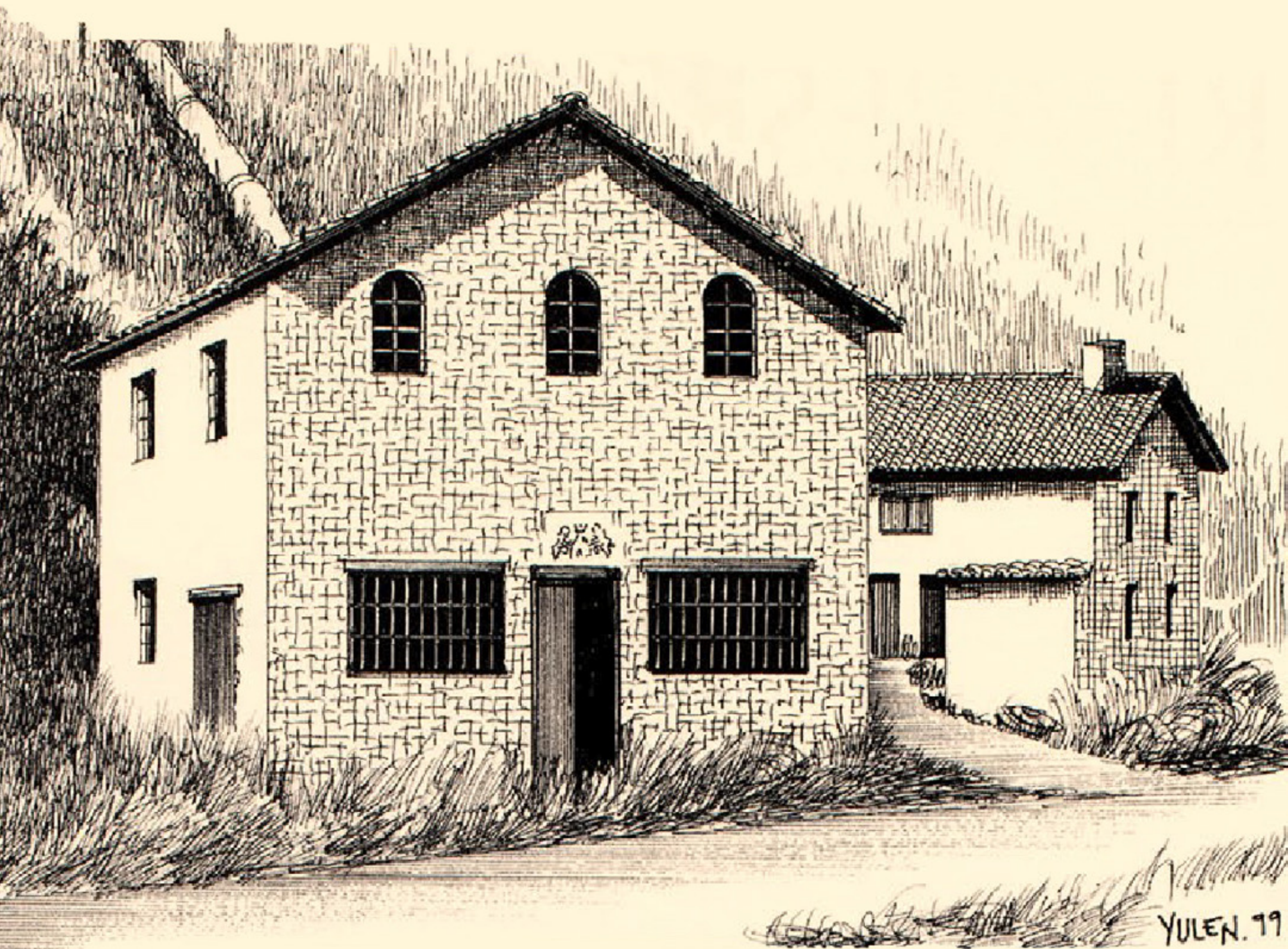
LI

THE DEBA HYDROELECTRIC POWER PLANT



L1

The Artzabal power plant began operations in 1926 and supplied around 20% of Deba's energy needs for several decades.



The Ugartezarra power plant was situated in the upper section of the Lastur Valley. This plant collected water from the higher springs.



L2

**ARNO.
LIMESTONE PYRAMIDS
AND HOLM OAK
FORESTS**

LASTUR GEOROUTE

L2 ARNO. LIMESTONE PYRAMIDS AND HOLM OAK FORESTS



Pyramids of Arno



Deba valley

Gurutzeta 610 m

Arno 618 m

Cantabrian holm oak forest

L2

The Arno massif is a Special Area of Conservation (SAC) designated in 2013 because of its valuable **Cantabrian holm oak forests**.

It is part of the **Natura 2000 Network**, a European initiative for biodiversity conservation.



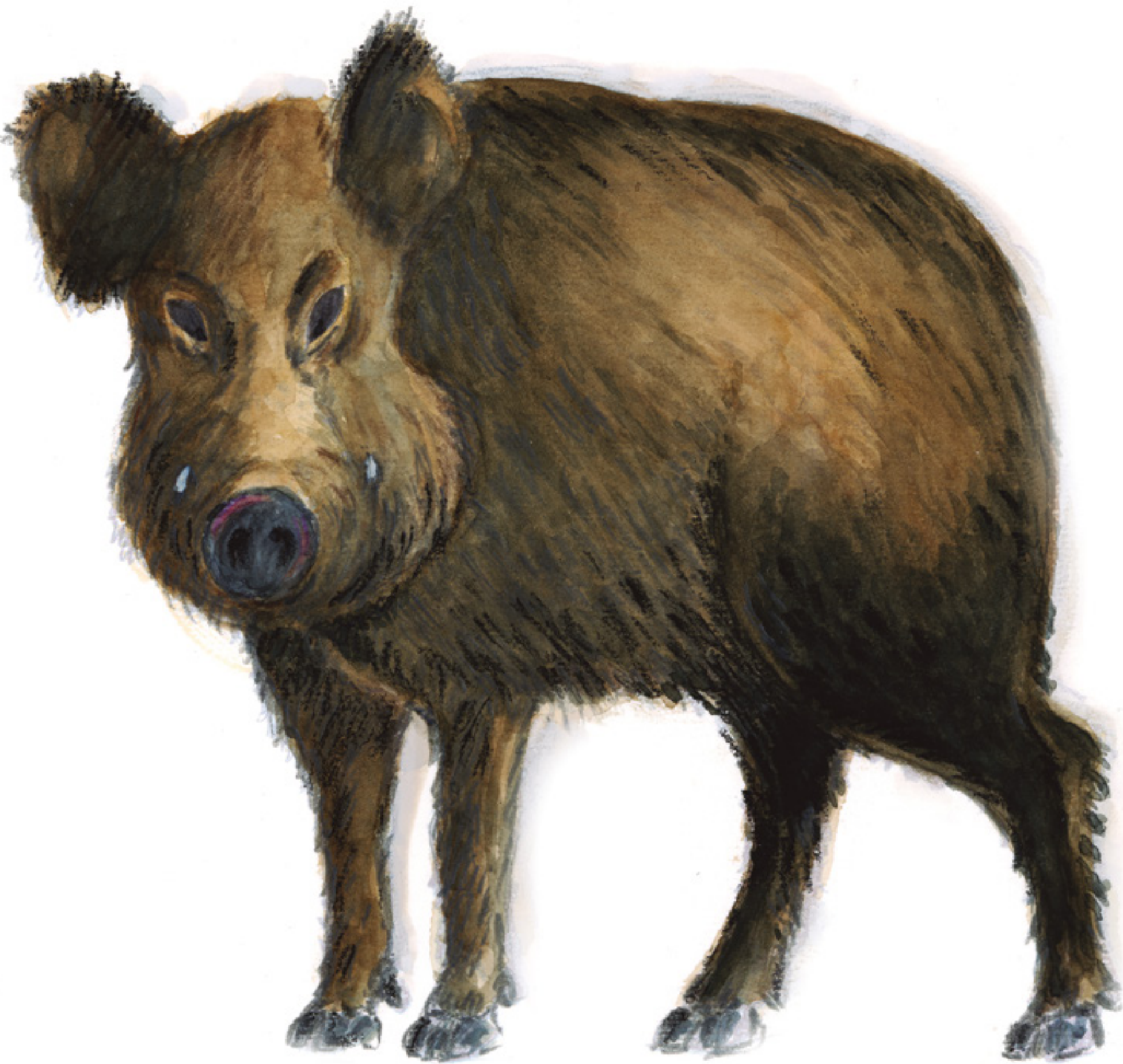
CANTABRIAN HOLM OAK FORESTS



Holm oaks are characteristic of a **Mediterranean climate**. In Gipuzkoa, they are maintained on steep limestone inclines with minimal soil and limited water availability.

LASTUR GEOROUTE

L2 ARNO. LIMESTONE PYRAMIDS AND HOLM OAK FORESTS

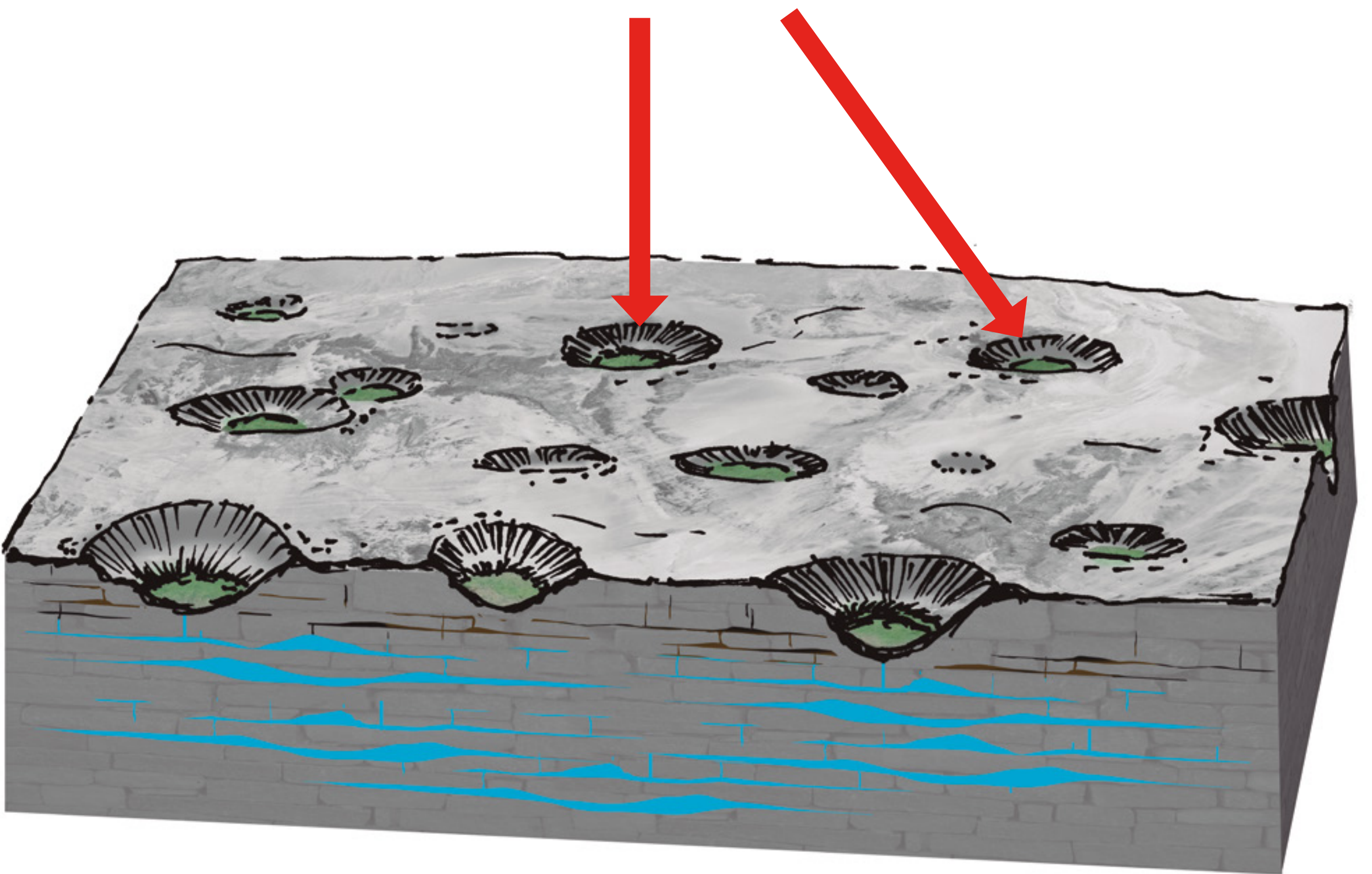


Wild boars rank among the animals most suited to the thick holm oak woodlands. They are swift, short and possess skin as rough as sandpaper. Make sure to gaze at the sky; the **Egyptian vulture** is observing from above.



KARST AND LIMESTONE PYRAMIDS

Dissolution sinkholes



How are these pyramids formed?

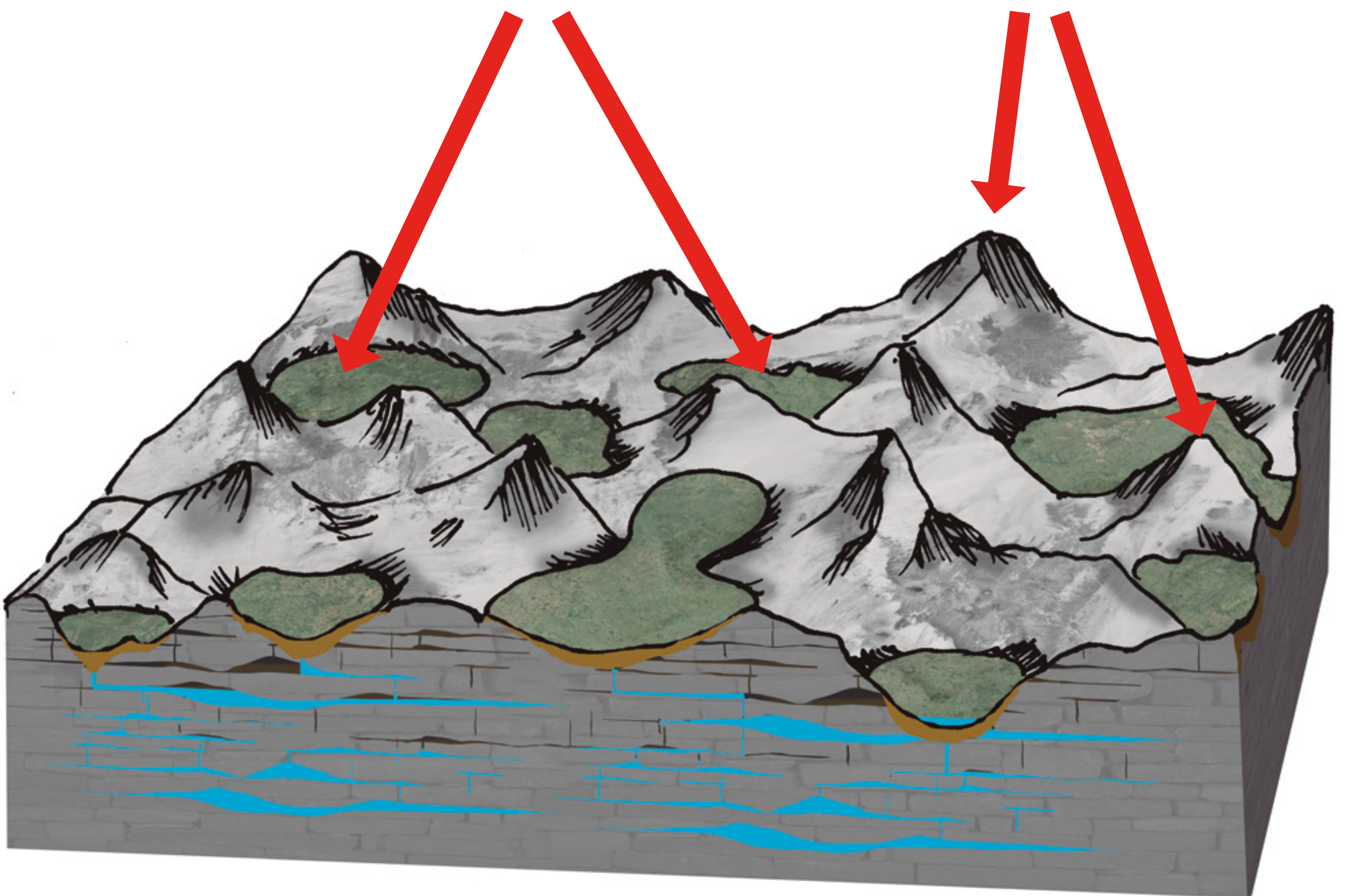
1. Approximately 5 million years ago, limestone emerged from the ocean and started to dissolve because rainwater became acidic when it interacted with the atmosphere and the plants on the surface.



KARST AND LIMESTONE PYRAMIDS

Depressions

Pinnacles



2. The sinkholes grew larger, and valleys formed. The more resistant limestones dissolved in a pyramid shape, resulting in a karst landscape characteristic of subtropical areas.

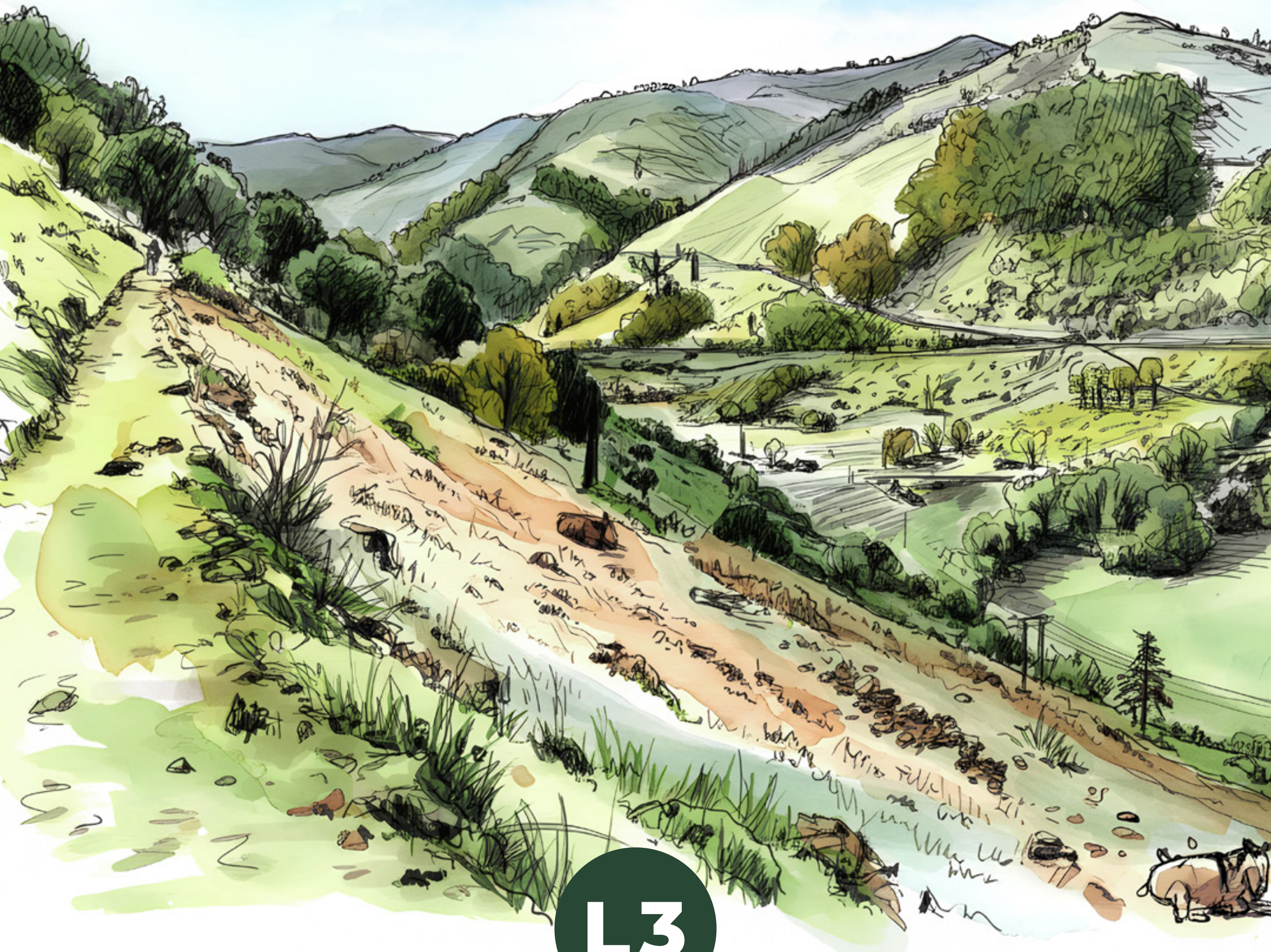


LL3

THE WATER
CHANNEL

LASTUR GEOROUTE

L3 THE WATER CHANNEL



L3

From 1920 to 1928, the Deba Town Council promoted the construction of the Lastur channel and hydroelectric power plants to supply water and electricity to the municipality.

LASTUR GEOROUTE

L3 THE WATER CHANNEL

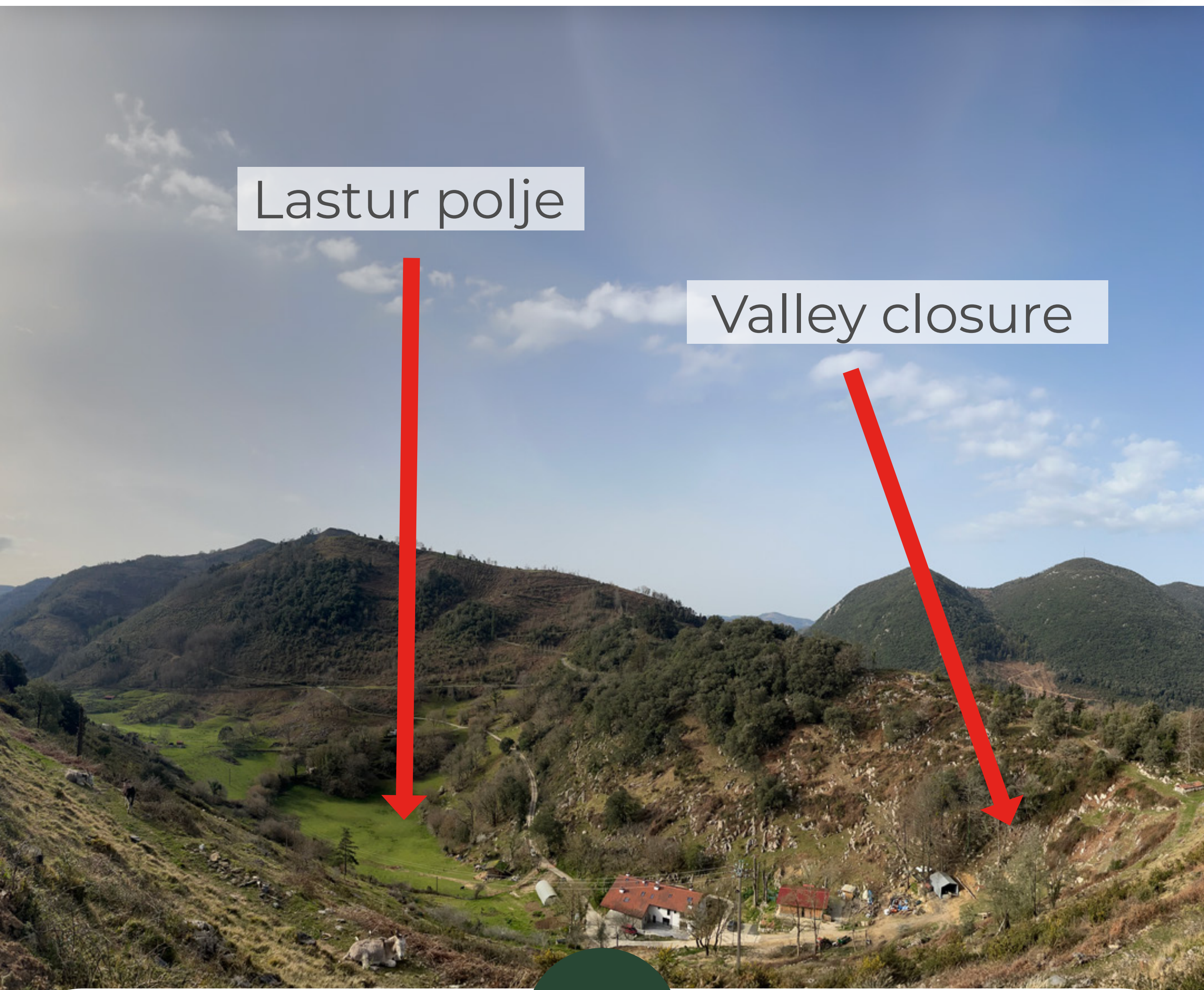


The entire infrastructure comprised over **8 kilometers** of channels designed to transport water from the karst springs located in the upper section of the Lastur Valley to Deba.



L44

**AN ENCLOSED
VALLEY**



Lastur polje

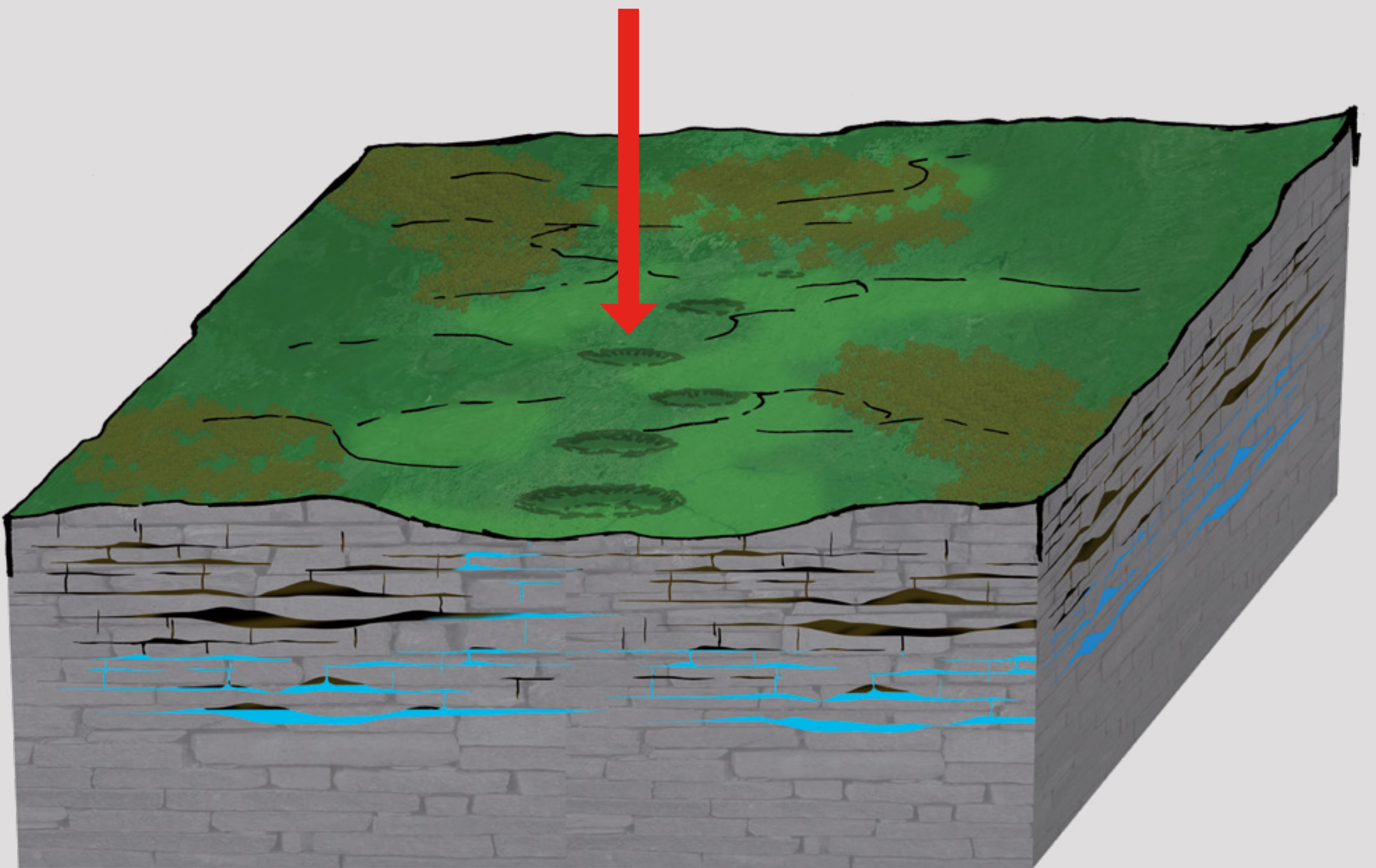
Valley closure

L4

Observe the landscape surrounding you. Lastur is a secluded and remote valley. Actually, it is an extensive, **stretched-out depression** known as a **polje**, created by the gradual dissolution of limestone.



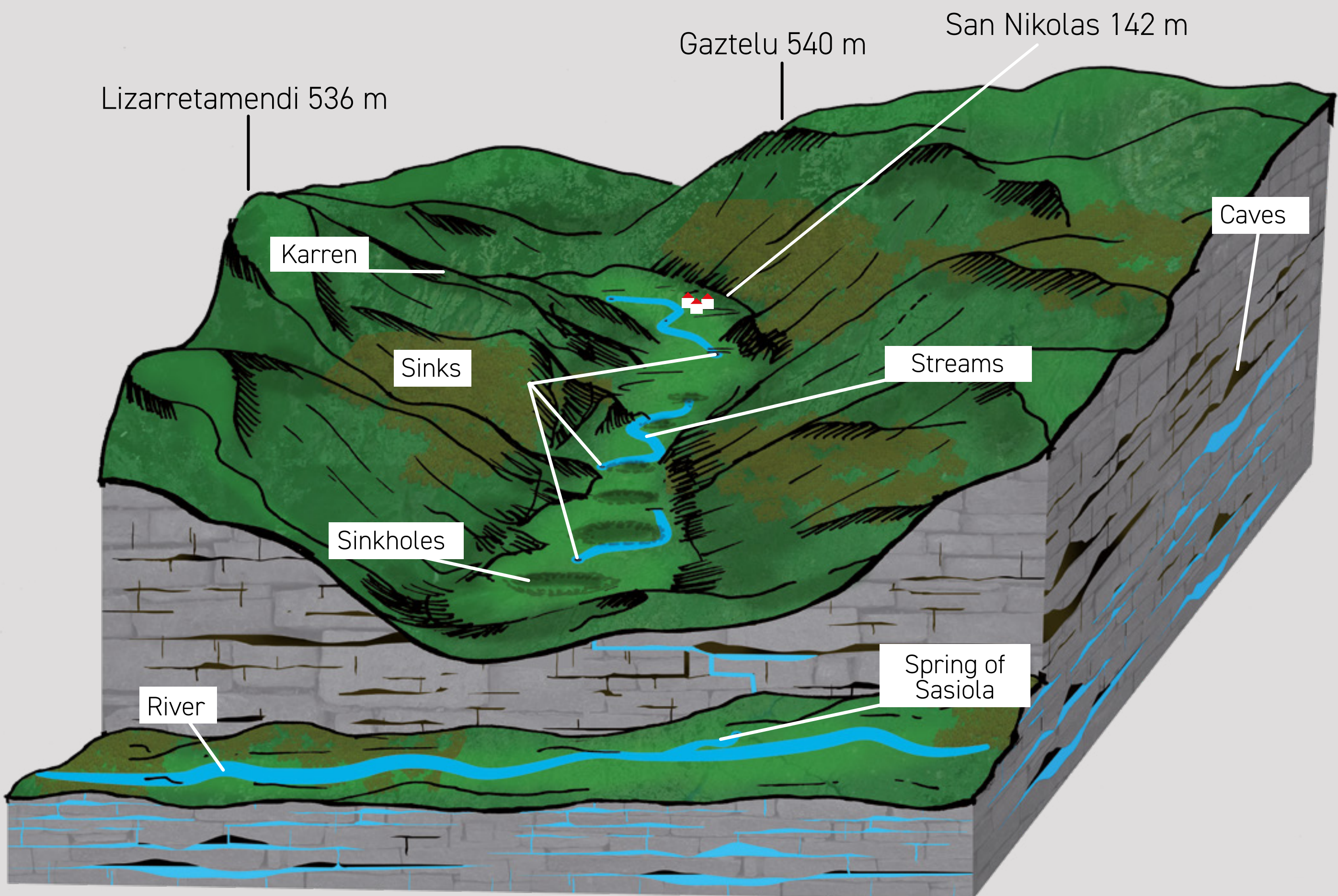
Dissolution sinkholes



Approximately 5 million years ago, the limestone that currently forms these mountains slowly emerged from the ocean. Water started to erode it, creating a **series of dolines**, tiny, funnel-like depressions.

LASTUR GEOROUTE

L4 AN ENCLOSED VALLEY



The sinkholes merge, and the erosion persists, resulting in an **extended depression** approximately 3 km long and 500 m deep, referred to as a polje.



Arbil cave

The inclines of Lastur hold many caves that signify **old subterranean water channels**. Examining them enables us to rebuild the formation of the polje.

LASTUR GEOROUTE

L4 AN ENCLOSED VALLEY



The dissolution of the limestone creates an accumulation of fine, insoluble sediments at the bottom of the valley, resulting in **fertile soils** that are highly suitable for agricultural production.



LS

**SINKHOLES. THE
FUNNELS OF LASTUR**



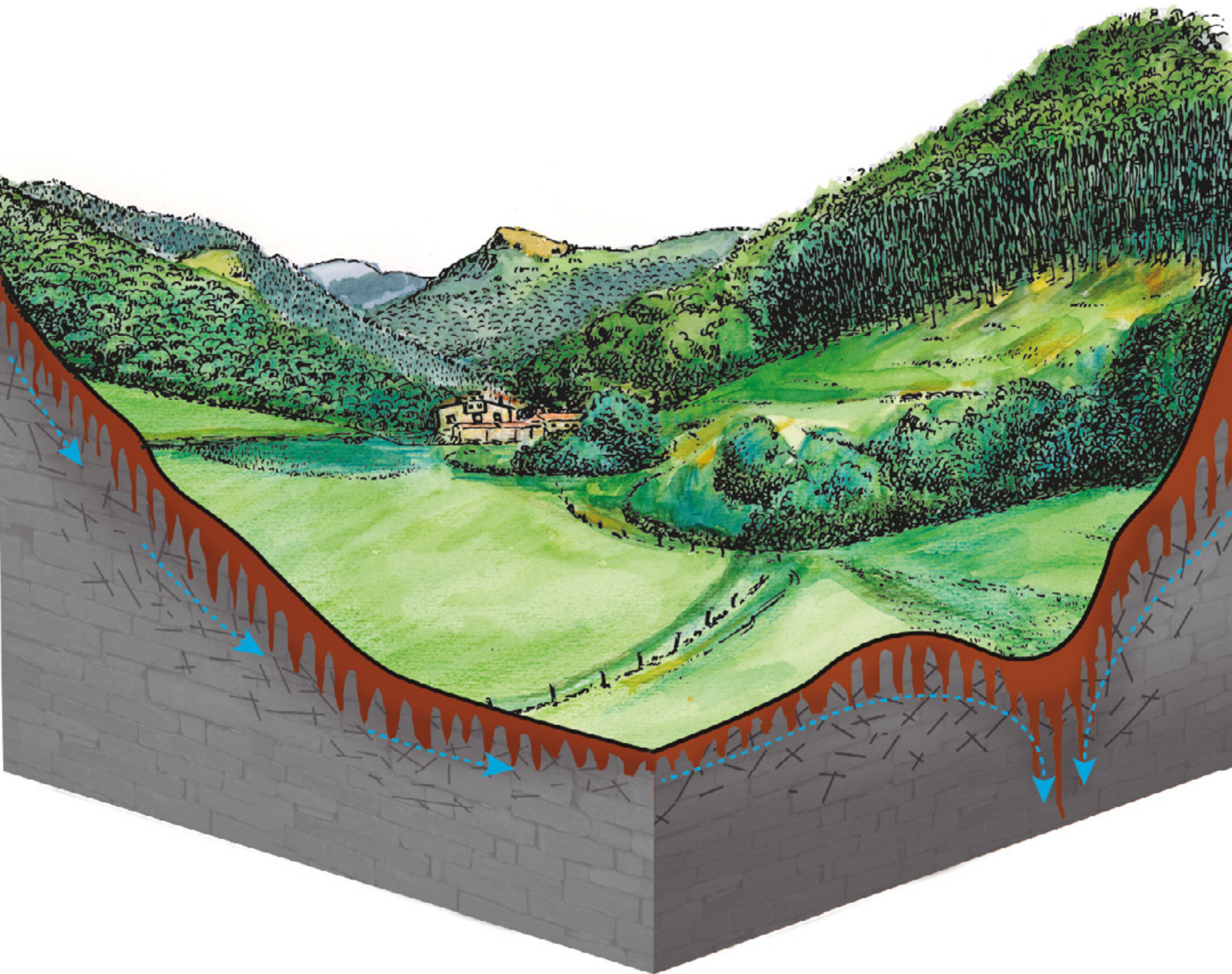
Dissolution sinkholes

L5

The bottom of the Lastur Valley lacks a stream with a stable flow. The water filters through a series of sinkholes and funnel-shaped dolines.

LASTUR GEOROUTE

L5 SINKHOLES. THE FUNNELS OF LASTUR



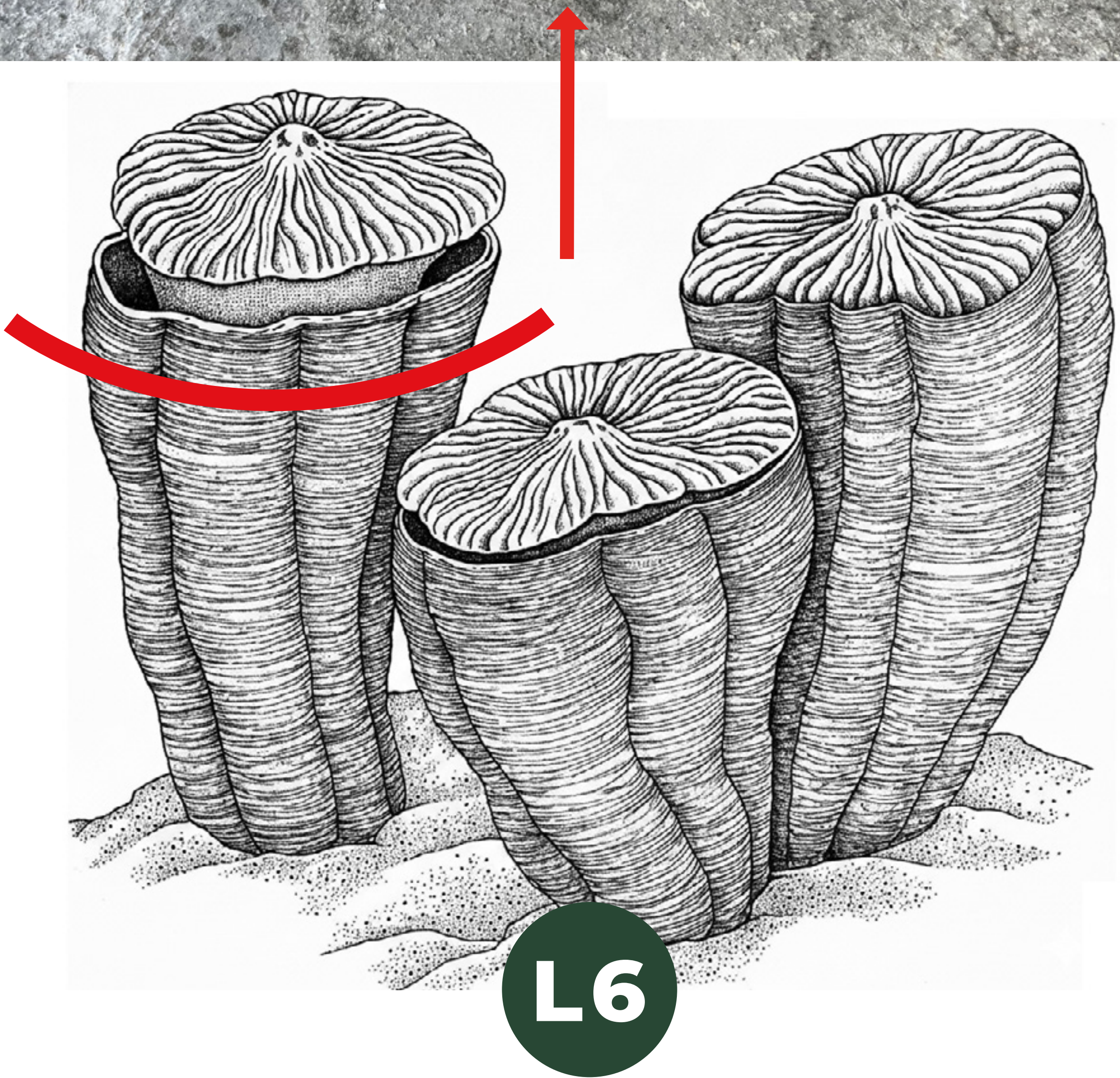
Sinkholes collect surface water and channel it into the **aquifer**.

The waters of Lastur flow through the interior of the mountain and emerge at the **Sasiola spring**, located on the Deba River one kilometer away.



LG

**FOSSILS OF A
TROPICAL SEA**



If you look at the rocks on the edge of the channel, you will see **fossils of rudists**, a cone-shaped bivalve that built large reefs in the tropical Cretaceous Sea, around 100 million years ago.



LL7

CORAL MOUNTAINS



The mountains in the interior of Geoparkea are formed from hard limestone originated in a tropical sea about 100 million years ago.

This limestone is extracted in Lastur and is a well-known decorative stone.



At the top of the Lastur Valley lies the Arbiskoa area, home to the springs that led to the creation of the Lastur Channel.

These springs are estimated to have a flow rate of roughly 50,000 liters daily.



L8

**LASTUR. A VERY
UNIQUE SQUARE**

LASTUR GEOROUTE

L8 LASTUR. A VERY UNIQUE SQUARE



L8

Since the 17th century, the square and the **hermitage of San Nikolas** have served as gathering places for residents of the Lastur Valley.

LASTUR GEOROUTE

L8 LASTUR. A VERY UNIQUE SQUARE

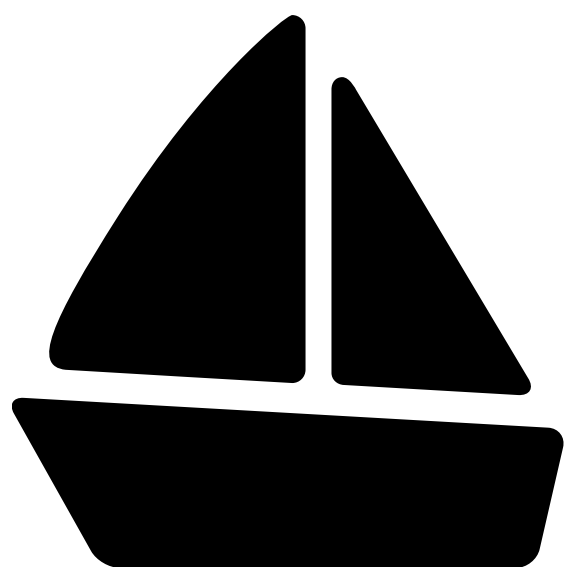


The unique bullring of Lastur has been the cradle of Basque bullfighting since the late 19th century. **The bulls of Lastur**, belonging to the native Betizu breed, are not exceptionally big but are well known for their speed and intelligence.

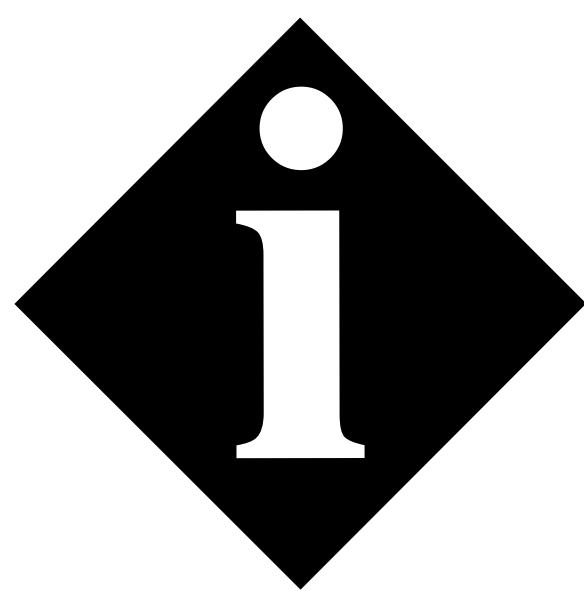
LASTUR GEOROUTE
+ **INFORMATION**



**SEE OTHER
GEOROUTES**



**GUIDED TOURS
PROGRAM**



**LASTUR
INTERPRETATION
CENTER**

geoparkea.eus



#GEOPARKEA

GEOPARKEA

EUSKAL KOSTALDEA · COSTA VASCA

Gipuzkoako
Foru Aldundia
Diputación Foral
de Gipuzkoa



ETORKIZUNA ORAIN
Es futuro



EUSKO JAURLARITZA
GOBIERNO VASCO

INGURUMEN, LURRALDE PLANGINTZA
ETA ETXEBIZITZA SAILA

DEPARTAMENTO DE MEDIO AMBIENTE,
PLANIFICACIÓN TERRITORIAL Y VIVIENDA

EUSKADI
BASQUE COUNTRY